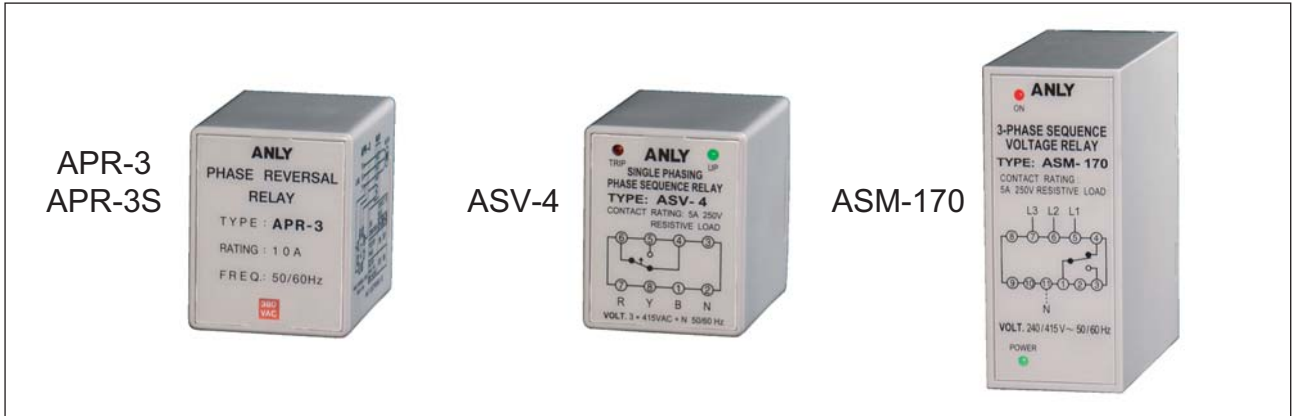




ANLY CONTROLLER

APR-3,-3S / ASV-4 / ASM-170 3-PHASE SEQUENCE VOLTAGE RELAY



CHARACTERISTIC :

- Only operational with correct power source voltage and phase sequence
- Suitable for main power source and motor starter circuit to prevent damage from insufficient phase or phase reversal
- Out-of-phase detection while the motor operating*

SPECIFICATION :

| | |
|-----------------------------------|--|
| Operating voltage | AC(V) : 220, 240, 380, 415, 440(APR-3) AC(V) : 208-440 (APR-3S, ASV-4, ASM-170) |
| Allowable operating voltage range | 85~110% of rated operating voltage |
| Rated frequency | 50 / 60 Hz |
| Contact rating | 250VAC 10A resistive load(APR-3) 250VAC 5A resistive load(others) |
| Reset time | APR-3: none, ASV-4: 300~600msec APR-3S, ASM-170: MAX 200msec |
| Power consumption | Approx. 2VA |
| Life | Mechanical: 5,000,000 times Electrical: 100,000 times |
| Ambient temperature | -10 ~ +50°C |
| Ambient humidity | MAX 85%RH |
| Weight | APR-3, ASV-4 Approx. 85g APR-3S Approx. 70g ASM-170 Approx. 100g |

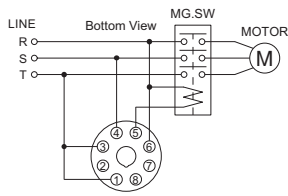
Note: "*" indicates not applicable to APR-3

TYPE SELECTION :

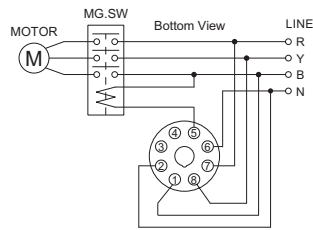
| Type | APR-3 | APR-3S | ASV-4 | ASM-170 |
|---------------------|----------------|-------------------------------|--------------------------------|---------------------------------|
| Source type | 3-Phase 3-Wire | 3-Phase 3-Wire | 3-Phase 4-Wire | 3-Phase 3-Wire or 4-Wire |
| Number of pins | 8P | 8P | 8P | 11P |
| Indicator operating | none | Red LED(ON) Green LED(PWR) | Red LED(TRIP) Green LED(UP) | Red LED(ON) Green LED(POWER) |

CONNECTION :

APR-3,3S

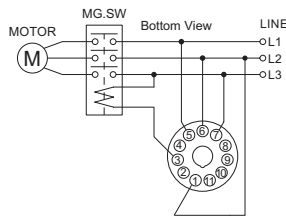


ASV-4

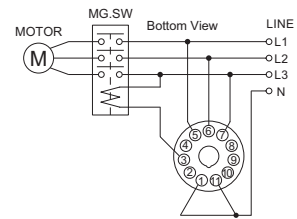


ASM-170

3-Phase 3-Wire

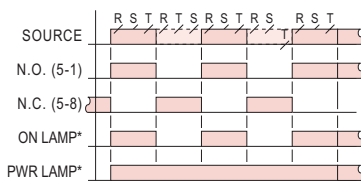


3-Phase 4-Wire



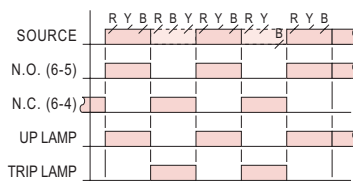
TIMING CHART :

APR-3,3S

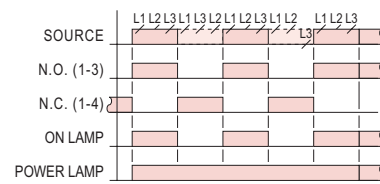


*For APR-3S only

ASV-4

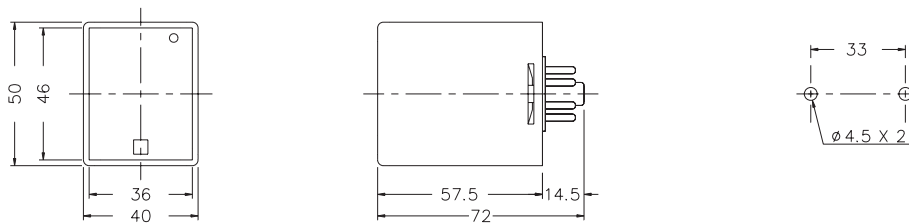


ASM-170

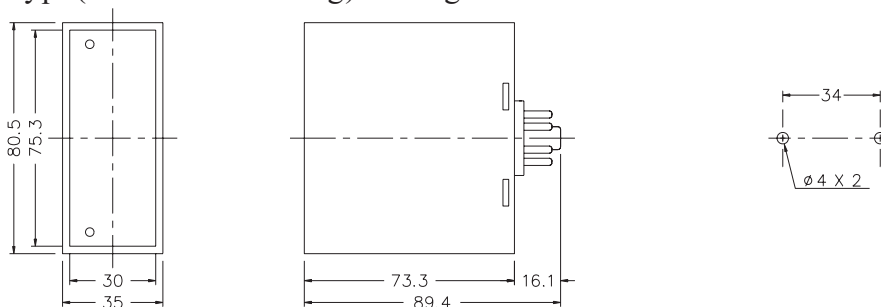


DIMENSIONS : (mm)

APR-3, APR-3S, ASV-4 N type(Surface Mounting): Using PF085A Socket & FH-3



ASM-170 N type(Surface Mounting): Using PF113A Socket



ANLY ELECTRONICS CO., LTD.

<http://www.anly.com.tw>

TAIWAN MAIN OFFICE : ANLY ELECTRONICS CO., LTD.

No.19, Lane 202, Fushou St., Shinjuang City, Taipei, Taiwan 242
TEL: +886-2-2996-3202 FAX: +886-2-2996-2017

MALAYSIA BRANCH : JUSTY ELECTRONICS (M) SDN, BHD.

No.1, Jalan 6/89B, Kawasan Perindustrian Trisegi, Batu 3 1/2 Off Jalan Sungei Besi, 57100 Kuala Lumpur, Malaysia
TEL: +60-3-7983-5758 FAX: +60-3-7981-5052

HONG KONG BRANCH : ANLY ELECTRONICS (HK) LTD.

Fiat K, 13/F, Edward Mansion, 141 Prince Edward Road W., Kowloon, Hong Kong
TEL: +852-2397-2505 FAX: +852-2397-6080

SHANGHAI BRANCH : ANLY TECHNOLOGY (WUXI) CO., LTD.

Room 13G, No.831, Xinzha Rd., Jingan District, Shanghai, China 200041
TEL: +86-21-6218-3300 FAX: +86-21-6217-5911